



Prague Crossroads
Introductory Brochure **2015**

N A D A C E
DAGMAR A VÁCLAVA HAVLOVÝCH
VIZE  **97**

PRAGUE  KŘIŽOVATKA
PRAŽSKÁ  CROSSROADS



The Prague Crossroads, an international spiritual centre, is one of the projects of Dagmar and Václav Havel Foundation VIZE 97, which is also intended to preserve and administer this unique space.

The main inspiration for the creation of the Prague Crossroads came from the former Czech President - the dissident, writer and dramatist Václav Havel. His concept was an evocative venue for all kinds of meetings, where lectures, discussions, concerts, performances, exhibitions, meditation and happenings can take place in a spirit of respect for the multicultural diversity of the modern world. Its main objective is to respond to the now widely felt need for open-minded and creative dialogue among people of different faiths, convictions and professions about the present state of our civilisation, the dangers threatening it, and the hopes for the future.

Prague Crossroads is located in a long-deconsecrated church, founded by St Wenceslas in 927 A.D.



Located in Zlatá Street in the Old Town (entrance from Liliová Street) the Prague Crossroads is housed in the long-deconsecrated church of Saint Lawrence which was originally founded in 927 A.D. by St. Wenceslas. After 1230, the Knights Templar settled there and they expanded St. Lawrence's Church according to their traditions so that it copied the Church of the Holy Sepulchre in Jerusalem, but on a smaller scale. In 1313, the Dominicans from the Monastery of St. Anne at Újezd purchased the monastery buildings, including St. Lawrence's Church. During the Hussite period and thereafter, the monastery and the church had a very unsettled fate. In 1782, Emperor Joseph II closed the monastery and the church was deconsecrated. The building went to the court printer, Johann Ferdinand von Schönfeld, who established a printing works there in 1816.

Among the paintings created immediately after the completion of the church, three large works depicting the Seven Sacraments, the Adoration of the Magi and the Lamentation of Christ are preserved in the sanctuary. The Lamentation of Christ is considered by art historians as the most valuable remaining painting in the sanctuary, as it has a close relationship to the Passion paintings by the master of the Třeboň altar.

The church has been under the administration of the National Theatre since the 1970s. In 1999, it leased the church to the Dagmar and Václav Havel VIZE 97 Foundation on a 99-year lease and work began on the very demanding reconstruction and rescue of the building. In 2004, the 3rd stage of the reconstruction work was completed and the area was officially opened with the traditional presentation of the VIZE 97 Foundation Awards. Since that time, many significant and socially interesting events have been held there.



Thanks to the efforts of the VIZE 97 Foundation, a unique cultural venue has been created that is able to provide comfort comparable to that of other locations with a similar purpose. The Prague Crossroads now has under-floor heating, a comprehensive electro-acoustic system and internal and external lighting. The British architect of Czech origin, Eva Jiřičná, who designed the interior, played a significant part in this work. In the place where an altar painting once stood, there is now a work by the well-known Czech painter Adriena Šimotová entitled *Ecstatic Figure*. In cooperation with leading Czech artists, the VIZE 97 Foundation is attempting to fill the space with unusual works of art. The sculptures "Dwarf-Tree" and "Big Heart" by Kurt Gebauer and glass vases and "Totem" by Bořek Šípek are installed in the space. A new work in the Church of St. Anne is "Crystal Touch" from the palm of President Václav Havel by glassmaker Jan Huňát, the wooden base of the wax heart by Lukáš Gavlovsky and Roman Švejda and a mural by Daniel Pešta entitled "My Diary with V.H.", sculpture "Annunciation" by Olbram Zoubek and "Black angel" by Jiří David.

Reconstruction is ongoing, however. In recent years, for instance, restorers working on the renovation of unique frescoes have managed to uncover unique paintings from the 14th century that are extensive and of an outstandingly high artistic standard and which are comparable with similar works at Karlštejn or in St Vitus' Cathedral. This year, the VIZE 97 Foundation plans to undertake a financially demanding reconstruction of the roof and a facade of the church.



CAPACITY OF THE PREMISES

Theatrical arrangement:

main nave350 PAX
gallery (a raised floor with a view of the podium) ...60 PAX

Banquets:

in the main nave at
round tables260 pax + 30 pax on the podium
in the main nave
at oblong tables 228 pax + 30 pax on the podium

Receptions (buffet):

The entire space of the church 500 až 600 PAX

HIRE OF THE SPACE:

We try to accommodate all of our clients both from the commercial and non-profit sectors to the greatest possible extent. If you are interested in renting the space, please visit our website at www.praguecrossroads.com.

Prague Crossroads is an entirely non-smoking area, but a special zone for smokers can be set up if requested.

"The Dvořákova Praha International Music Festival has included Pražská křižovatka, which represents exceptional space thanks to its genius loci, specific atmosphere, and top quality acoustics, into the portfolio of its concert halls. The Pražská křižovatka premises are an excellent option for more intimate concerts and solo recitals".

"After our experiences in the Prague State Opera, the Vinohrady Theatre and the Municipal House, I can highly recommend the space of Prague Crossroads – Church of St. Anne. You will be embraced by its genius loci, and will get something special." Projekt Šance o.s., launch of the book on sculptor Olbram Zoubek

"The concerts that we organised in the historic spaces of the Church of St. Anne were among the most beautiful, and the cooperation with the VIZE 97 Foundation was an experience that will not be forgotten." Spanish Embassy

Profits from the hire of the Prague Crossroads are used solely for the further reconstruction and renovation of these historic premises.



- 448 chairs
- 4 performers' dressing rooms
- fully-equipped service areas
- public cloakrooms (unstaffed)
- catering facilities
(solely for smaller receptions - cold snacks)
- toilets for performers
- Restrooms (men's, women's and disabled) are equipped with DYSON AIRBLADE hand dryers, donated by CLEANTEC hygiene technology s.r.o.
- toilets for the public. Restrooms (men's, women's and disabled) are equipped with DYSON AIRBLADE hand dryers, donated by CLEANTEC hygiene technology s.r.o.
- a security agency for the duration of the event.
- under-floor heating in the main nave of the church
- 8 vases designed by the architect Bořek Šípek
- floral decorations (lilies) in vases designed by the architect Bořek Šípek
- 10 large tables (160 x 100 cm)
- 4 small round tables (diameter 80 cm)
- speaker's lectern for the podium
- CCTV
- electro-acoustic equipment including 8 fixed and 2 roaming microphones
- lighting of the entire space including six effects lights
- stage lighting of the podium
- exterior lighting of the church
- qualified staff to operate the electro-acoustic and lighting equipment for the duration of the event.
- a responsible member of the Prague Crossroads staff present for the duration of the event.
- cleaning of the access pathway from Zlatá Street prior to the event.
- cleaning of the church before and after the event. (cleaning is not provided during either the event or the preparatory period)
- for events held during the winter months we supply heaters at our own expense
- wireless network in service areas

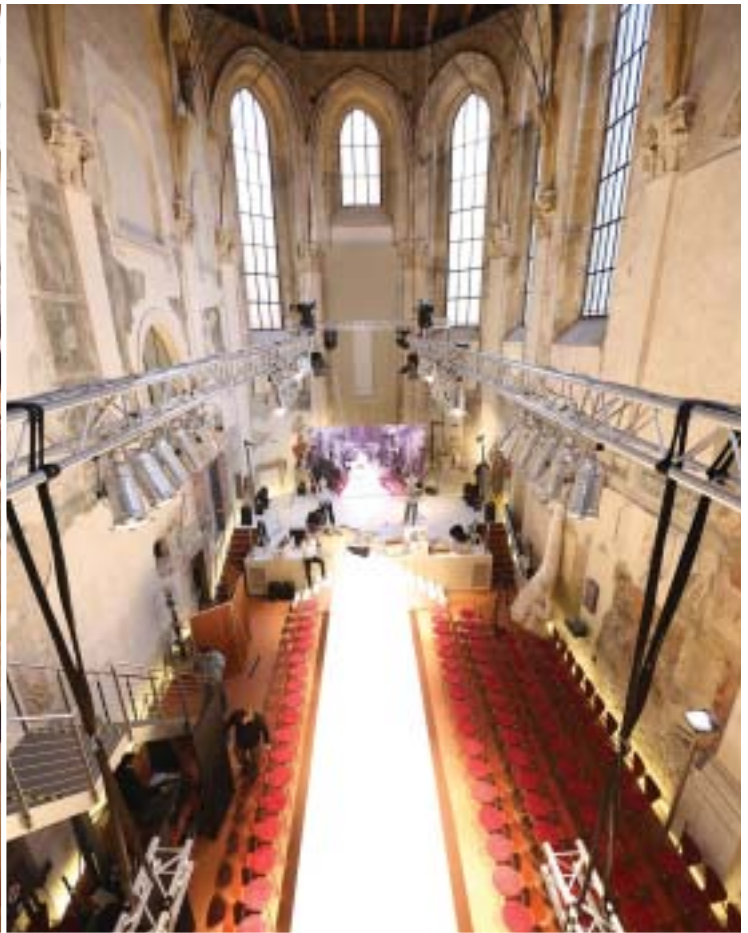
All the above facilities are an integral part of the hire agreement. Non-use of any of these facilities does not affect the final hire cost.

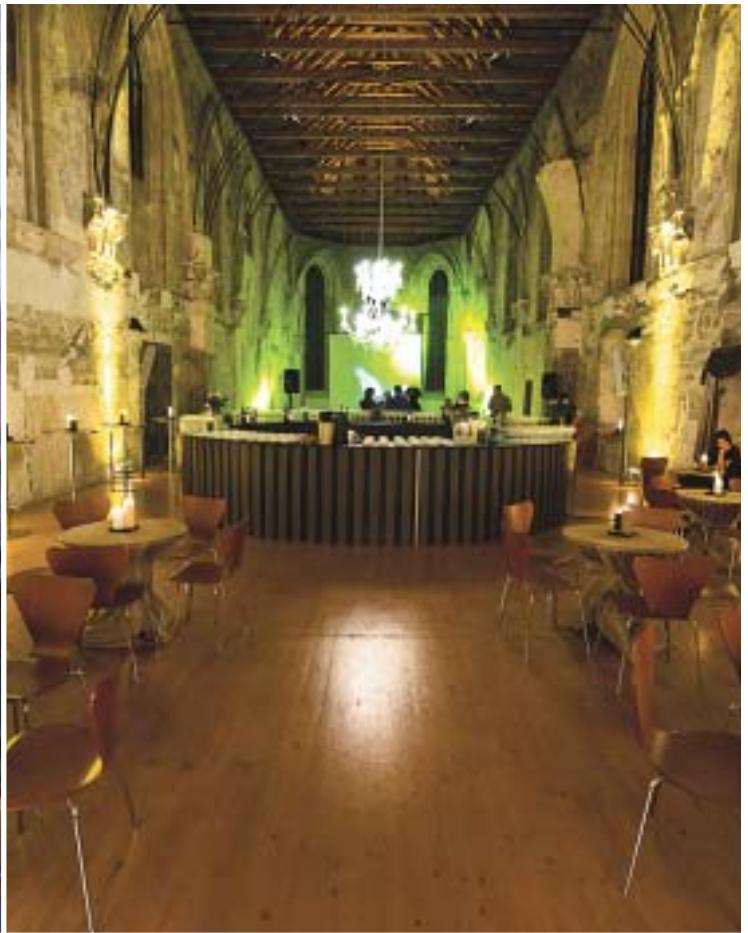


Hire of the adjacent courtyards belonging to the National Theatre for the purpose of erecting tents in the event of large receptions (hot meals, banquets, etc.). The courtyards may be hired for the erection of tents for catering, smoking, etc., as well as for the providing parking spaces.

Regarding the hire cost of the courtyards, please contact us at least 30 days prior to your planned event. The facilities must be booked directly from the National Theatre, which will also calculate the charge.









President Václav Havel and His Holiness the Dalai Lama



Dagmar Havlová with Madeleine Albright



His Majesty, King Norodom Sihamoni of the Kingdom of Cambodia



Robert Redford



The Prince Charles, Prince of Wales and architect Eva Jiřičná



Andy Garcia



Renée Fleming



Lou Reed



Joan Baez

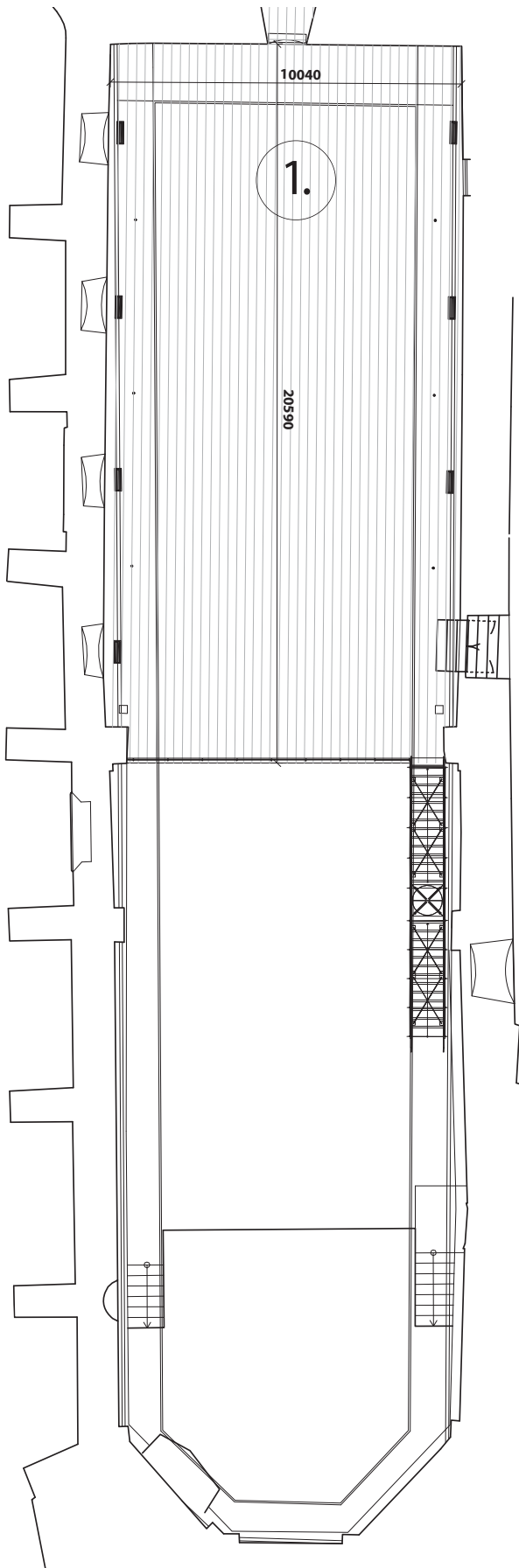


Suzanne Vega

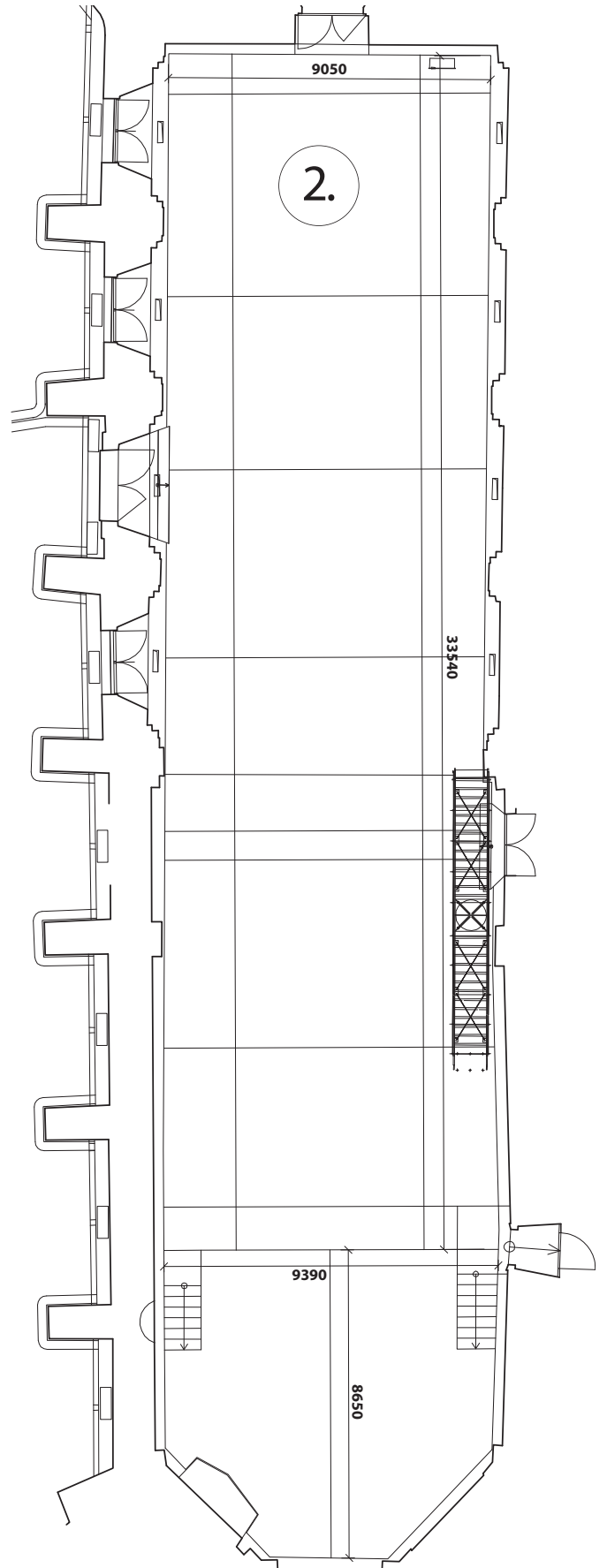


Mrs. and Mr. Havel with Tom Stoppard

1. Ground plan of the gallery



2. Ground plan of the main nave of the church





„The Totem pole“ by Bořek Šípek



„The Big Heart“ by Kurt Gebauer



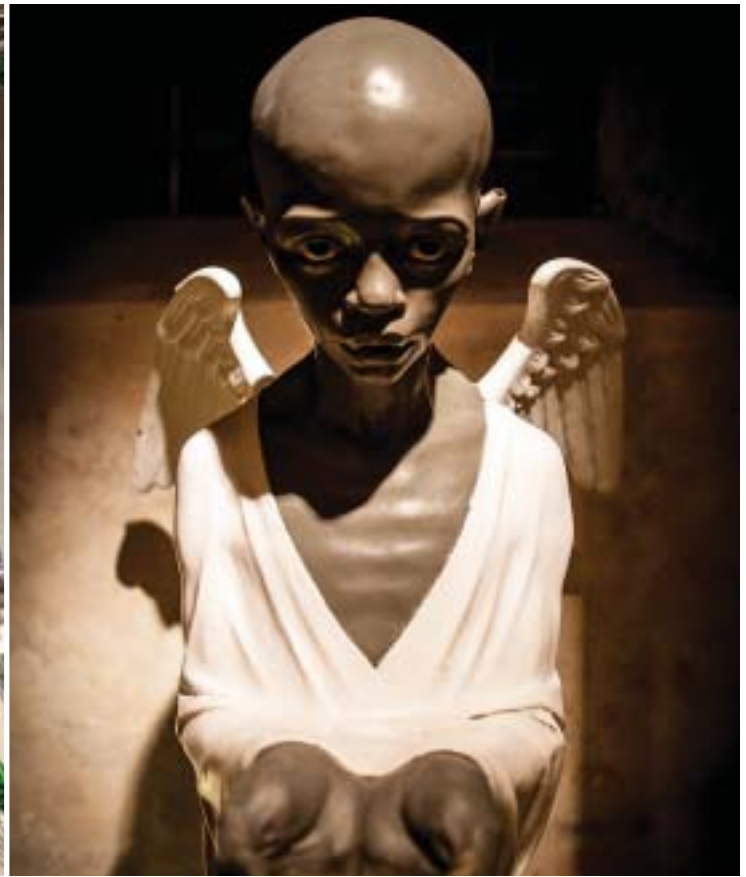
„The Crystal touch“ by Jan Huňát



„My Diary with V.H. (2007 -2010)“ by Daniel Pešta



Vases by Bořek Šípek



„Black angel“ by Jiří David



The drawing „Ecstatic Figure“ by Adriena Šímová



„Statue of a Plaster Dwarf“ by Kurt Gebauer



„A Heart for Václav Havel“ – the plinth by Lukáš Gavlovský a Roman Švejda



Sculpture „Annunciation“ by Olbram Zoubek



**Concerning overall administration,
reconstruction and hire
of the Prague Crossroads:**

Dagmar and Václav Havel Foundation VIZE 97
Voršilská 10, 110 00 Praha 1
Tel.: +420 234 097 811
E-mail: prazsakrizovatka@vize.cz
www.vize.cz, www.praguecrossroads.com

N A D A C E
DAGMAR A VÁCLAVA HAVLOVÝCH
VIZE 97

PRAGUE KRÍŽOVATKA
PRAŽSKÁ CROSSROADS